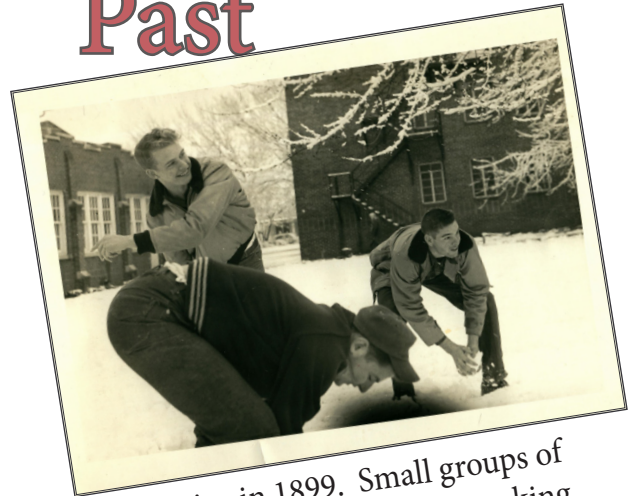


# Past



Our story begins in 1899. Small groups of committed holiness believers were seeking a place to educate their young. After much thought and prayer, Texas Holiness University was created with about 100 students, offering a Bachelor of Arts degree. Over the years the college grew and the young people who were trained there were making a difference for Christ all over the world.

[www.SNU.edu](http://www.SNU.edu)

# Our Future....

Our future is bright because the same spirit that inspired and propelled those in 1899 to begin a school is still alive. Please join us as we journey into the future.

Would you remember our current and future students in your prayers? Could you give of your resources to continue the good works of educating our youth? Thank you for supporting this University yesterday, today and tomorrow.

The education of today determines the standards of tomorrow - R.T. Williams, President of Peniel College from 1911-13 and General Superintendent from 1916-46.

Give today at [community.snu.edu/give](http://community.snu.edu/give) or by mail in the postage paid envelope enclosed.

Southern Nazarene University ❄️ 6729 NW 39th Expressway ❄️ Bethany, OK 73008

# Present



Today we have an enrollment of 1,068 traditional undergraduates and 1,111 professional and graduate studies students. We offer 133 areas of study and our academics are of such rigor that many of our graduates are accepted into distinguished master's and doctoral programs around the world. Yet, as exciting as the academic standards are, perhaps our greatest boast is the Christ-centered community in which our students are immersed.

405-491-6606

*SNU  
Carol*

Doors of Bresee Hall on SNU Campus



*Merry Christmas*

*from all of us at*

*Southern Nazarene University*



<https://community.snu.edu/give>

*An  
Christmas*